



# Stonepost Valley Retail

13301 W. 135th St. - Overland Park, KS 66211

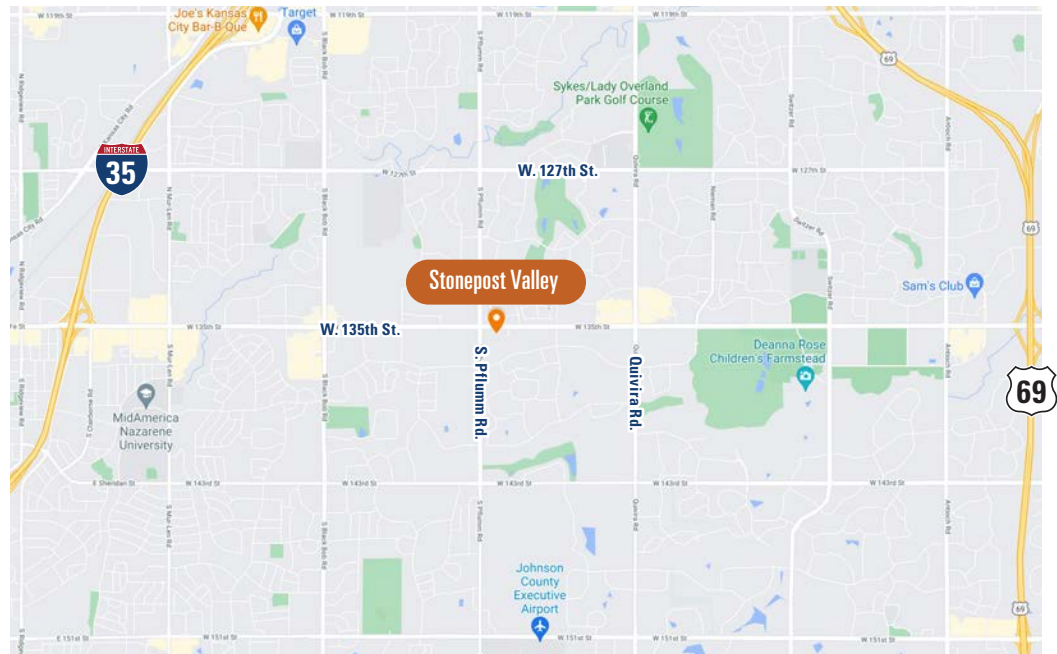
**PAD SITES FOR SALE  
& RETAIL SPACE  
AVAILABLE**



## Property Highlights

Stonepost Valley Retail is located at the southeast corner of 135th street and Pflumm Road. These first two commercial buildings are currently surrounded by 491 upscale apartments.

This mixed-use complex is platted for up to six more commercial buildings to serve the population growth of the area.



Demographics	1 Mile	3 Miles	5 Miles
Population (2021)	13,261	95,696	230,600
Average Household Income	\$156,479	\$128,776	\$123,239
Number of Households	4,479	34,934	86,987

**NOW LEASING**

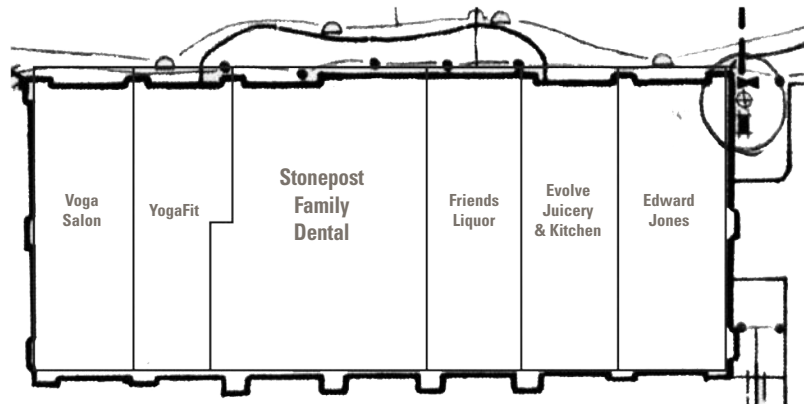
**BY OWNER:** Price Brothers 913.955.2222 - PriceBrothersKC.com



# Stonepost Valley Retail - Building C

13301 W. 135th St. - Overland Park, KS 66211

UNAVAILABLE



## Available Suites

Suite #

Sq. Ft.

Suite #	Sq. Ft.



NOW LEASING

BY OWNER:



Price Brothers

913.955.2222 - PriceBrothersKC.com

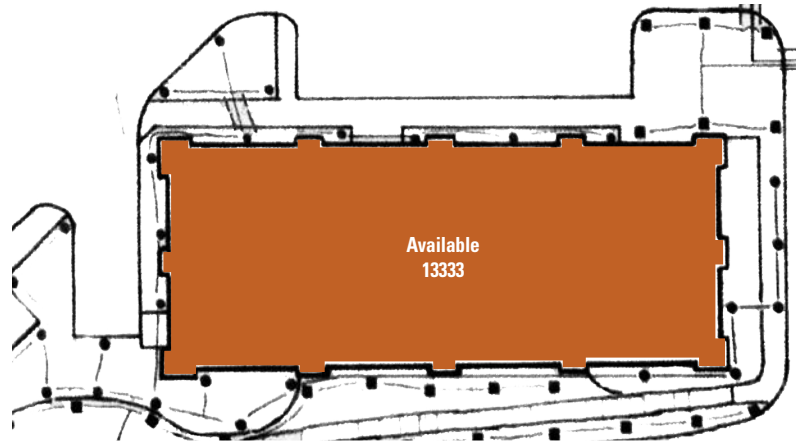




# Stonepost Valley Retail - Building D

13333 W. 135th St. - Overland Park, KS 66211

OFFICE/RETAIL SPACE  
**AVAILABLE**



## Available Suites

Suite #	Sq. Ft.
13333	5,040



**NOW LEASING**

BY OWNER:



Price Brothers 913.955.2222 - [PriceBrothersKC.com](http://PriceBrothersKC.com)



# Stonepost Valley Retail - Pad Sites

13301 W. 135th St. - Overland Park, KS 66211

PAD SITES  
**FOR SALE**



## Available Pads

Pad	Acres
1	1.23
2	3.41

**FOR SALE**

BY OWNER:



Price Brothers

913.955.2222 - [PriceBrothersKC.com](http://PriceBrothersKC.com)